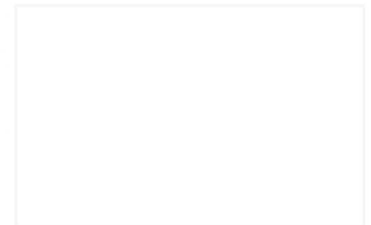
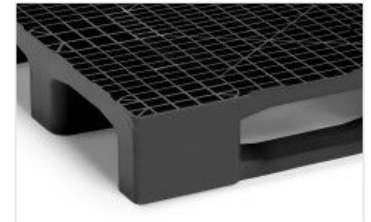


HEAVY MONOBLOC EURO PALLET WITH THREE RUNNERS

MEDIUM LOGIC PRO 1208-G3



One-piece Euro pallet, of standard dimensions and high load capacity, ideal for reuse applications. Suitable for any type of load in all types of uses and sectors. Compatible with all standard handling equipment.

Advantages

✓ Apto Rack

✓ Perímetro anti-impacto

✓ Esquinas preparadas para un óptimo retráctilado

Technical data

Ref	Materials	Weight	Measures	Static load*1	Dynamic load*1	Rack load*1
LOGIC PRO 1208-G3	rPE rPP	17.40 kg [38.35 lb]	1200x800x160mm [47.20x31.50x6.30"]	7500 kg [16535 lb]	2000 kg [4410 lb]	1000 kg [2210 lb]

Logistic data

Ref	20' DV	40' DV	40 HC	45' PWHC	Tauliner	Mega	Jumbo
LOGIC PRO 1208-G3	143	325	400	528	528	594	684

HEAVY MONOBLOC EURO PALLET WITH THREE RUNNERS

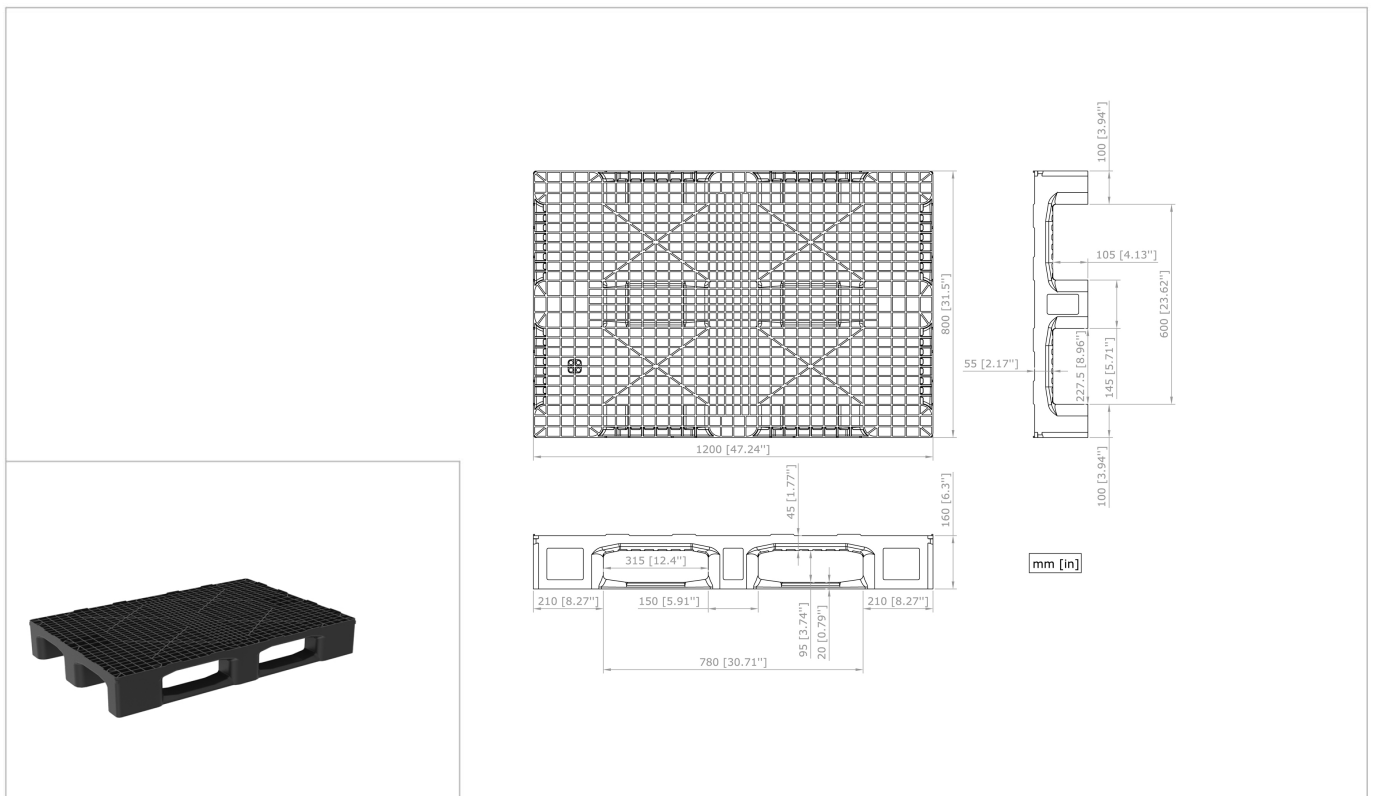
MEDIUM LOGIC PRO 1208-G3



Options

- ✓ Color personalizable
- ✓ Etiqueta RFID
- ✓ Logo serigrafiado
- ✓ Logo grabado
- ✓ Topes personalizables o sin topes
- ✓ Otros materiales disponibles

Technical drawing



Iconography legend



-20°/40°C [-4°/104°F]



0°/40°C [32°/104°F]



open



4-ways



Rims for boxes

Recommendations for use

- ✓ Do not stack more than 48 pallets, which is equivalent to a height of 7,7 m when empty.
- ✓ Do not handle stacks of more than 27 empty pallets.
- ✓ Once stacked in height check that they are properly fitted.

*1 The values indicated are approximate and are based on both practical experiences and ISO 8611 tests with a uniformly distributed standard load, distributed all over the pallet surface, duly consolidated, compact and stable and at ambient temperature (20°C [68°F]) for a specific time. Different load conditions produce different values that have to be checked at the customer's request. Any deterioration or breakage in the pallet may vary these results.

*2 Due to the characteristics of the materials recycled, the dimensions and the weight of the pallets may present certain tolerances. Dimensional tolerances according to DIN ISO 2768-V and weight tolerances: +/- 4%. Except for references of the FLAT category: +/- 3%.

- Nortpalet reserves the right to modify any information herein indicated without prior notice.

- The specifications can be affected in case of alteration of the product with parts and / or materials different from those approved by the Nortpalet quality department. Any warranty, specification or liability on the part of Nortpalet will be terminated in case of modification of the product with spare parts not supplied by Nortpalet.