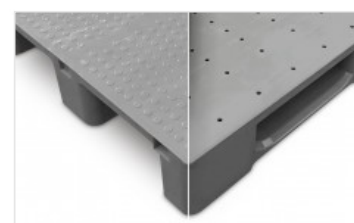


MONOBLOC EURO PALLET 3 RUNNERS

MEDIUM FLAT 1208-C3



European monobloc plastic pallet, 3 runners and standard dimensions ideal for reuse applications and high loads capacity in rack storage. Thanks to its smooth surface, the pallet ensures effective cleaning and fast drying.

Advantages

- ✓ Apto Rack
- ✓ Posibilidad de refuerzos metálicos (1, 2, 3 y en H)
- ✓ Ventanas diafnas para facilitar su manipulación
- ✓ Topes 8 mm para mejor apilamiento en vacío y retención mercancía
- ✓ Tablero liso y sin cavidades para fácil limpieza

Technical data

Ref	Materials	Weigh	Measures	Static load*1	Dynamic load*1	Rack load*1
FLAT 1208-C3		15.00 kg [33.10 lb]	1200x800x155mm [47.20x31.50x6.10"]	5000 kg [11025 lb]	1500 kg [3310 lb]	750 kg [1655 lb]

Logistic data

Ref	20' DV	40' DV	40 HC	45' PWHC	Tauliner	Mega	Jumbo
FLAT 1208-C3	154	350	400	528	528	594	684

MONOBLOC EURO PALLET 3 RUNNERS

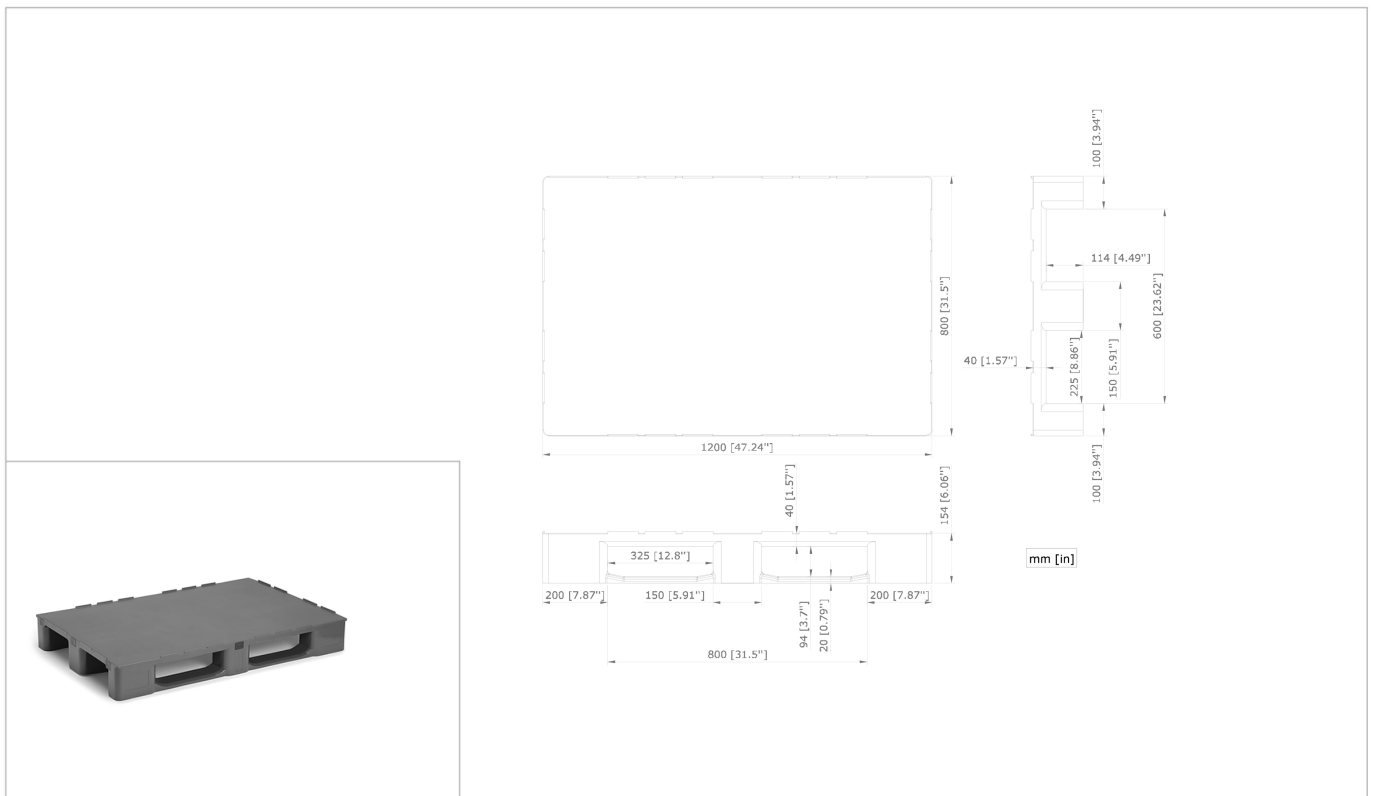
MEDIUM FLAT 1208-C3



Options

- ✓ Color personalizable
- ✓ Logo serigrafiado
- ✓ Logo grabado
- ✓ Topes personalizables o sin topes
- ✓ Etiquetas
- ✓ Otros materiales disponibles
- ✓ Superficie especial bobinas
- ✓ Superficie antideslizante

Technical drawing



Iconography legend



-20°/40°C [-4°/104°F]



Closed



4-ways

Recommendations for use

- ✓ Do not stack more than 48 pallets, which equates to a height of 7,2 when empty.
- ✓ Do not handle blocks more 29 empty pallets.
- ✓ Once Stacked, check that they are properly fitted.

*1 The values indicated are approximate and are based on both practical experiences and ISO 8611 tests with a uniformly distributed standard load, distributed all over the pallet surface, duly consolidated, compact and stable and at ambient temperature (20°C [68°F]) for a specific time. Different load conditions produce different values that have to be checked at the customer's request. Any deterioration or breakage in the pallet may vary these results.

*2 Due to the characteristics of the materials recycled, the dimensions and the weight of the pallets may present certain tolerances. Dimensional tolerances according to DIN ISO 2768-V and weight tolerances: +/- 4%. Except for references of the FLAT category: +/- 3%.

- Nortpalet reserves the right to modify any information herein indicated without prior notice.

- The specifications can be affected in case of alteration of the product with parts and / or materials different from those approved by the Nortpalet quality department. Any warranty, specification or liability on the part of Nortpalet will be terminated in case of modification of the product with spare parts not supplied by Nortpalet.