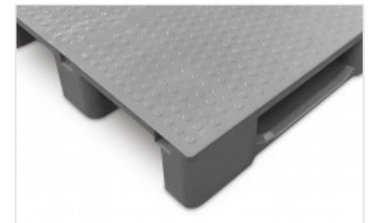


MONOBLOC INDUSTRIAL PALLET 5 RUNNERS REINFORCED "H"

HEAVY DUTY FLAT HRACK 1210-C5



Monobloc industrial plastic pallet with 5 runners and special reinforcements for high loads on rack of any type of goods, especially the ones with non uniformed weight. Recomendated for mass storage and hight stability on rack. Thanks to its smooth surface, the pallet ensures effective cleaning and fast drying.

Advantages

- ✓ Apto Rack
- ✓ Ventanas diafnas para facilitar su manipulación
- ✓ Tablero liso y sin cavidades para fácil limpieza
- ✓ Topes 8 mm para mejor apilamiento en vacío y retención mercancía
- ✓ Tubos de refuerzo en H, especial para bobinas o cargas no uniformes

Technical data

Ref	Materials	Weigh	Measures	Static load*1	Dynamic load*1	Rack load*1
FLAT HRACK 1210-C5		24.70 kg [54.50 lb]	1200x1000x155mm [47.20x39.40x6.10"]	8000 kg [17635 lb]	2000 kg [4410 lb]	1300 kg [2865 lb]

Logistic data

Ref	20' DV	40' DV	40 HC	45' PWHC	Tauliner	Mega	Jumbo
FLAT HRACK 1210-C5	140	294	336	416	416	468	540

MONOBLOC INDUSTRIAL PALLET 5 RUNNERS REINFORCED "H"

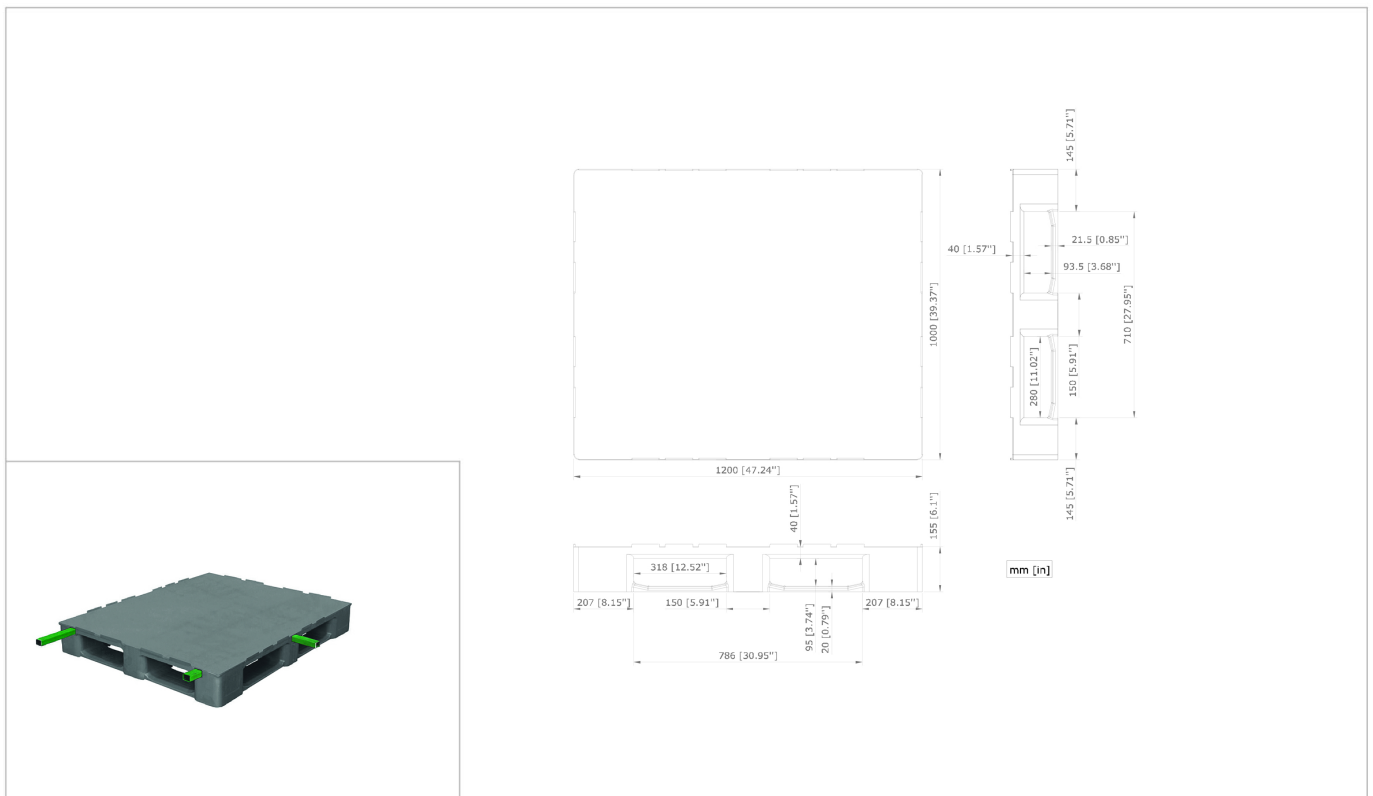
HEAVY DUTY FLAT HRACK 1210-C5



Options

- ✓ Color personalizable
- ✓ Logo serigrafiado
- ✓ Logo grabado
- ✓ Topes personalizables o sin topes
- ✓ Etiquetas
- ✓ Otros materiales disponibles
- ✓ Superficie antideslizante

Technical drawing



Iconography legend

- 20°/40°C [-4°/104°F]
- Closed
- 4-ways
- Rims for boxes
- Reinforced

Recommendations for use

- ✓ Do not stack more than 50 pallets, which equates to a height of 7,7 m when empty.
- ✓ Do not handle blocks more 27 empty pallets.
- ✓ Once Stacked, check that they are properly fitted.

*1 The values indicated are approximate and are based on both practical experiences and ISO 8611 tests with a uniformly distributed standard load, distributed all over the pallet surface, duly consolidated, compact and stable and at ambient temperature (20°C [68°F]) for a specific time. Different load conditions produce different values that have to be checked at the customer's request. Any deterioration or breakage in the pallet may vary these results.

*2 Due to the characteristics of the materials recycled, the dimensions and the weight of the pallets may present certain tolerances. Dimensional tolerances according to DIN ISO 2768-V and weight tolerances: +/- 4%. Except for references of the FLAT category: +/- 3%.

- Nortpalet reserves the right to modify any information herein indicated without prior notice.

- The specifications can be affected in case of alteration of the product with parts and / or materials different from those approved by the Nortpalet quality department. Any warranty, specification or liability on the part of Nortpalet will be terminated in case of modification of the product with spare parts not supplied by Nortpalet.